

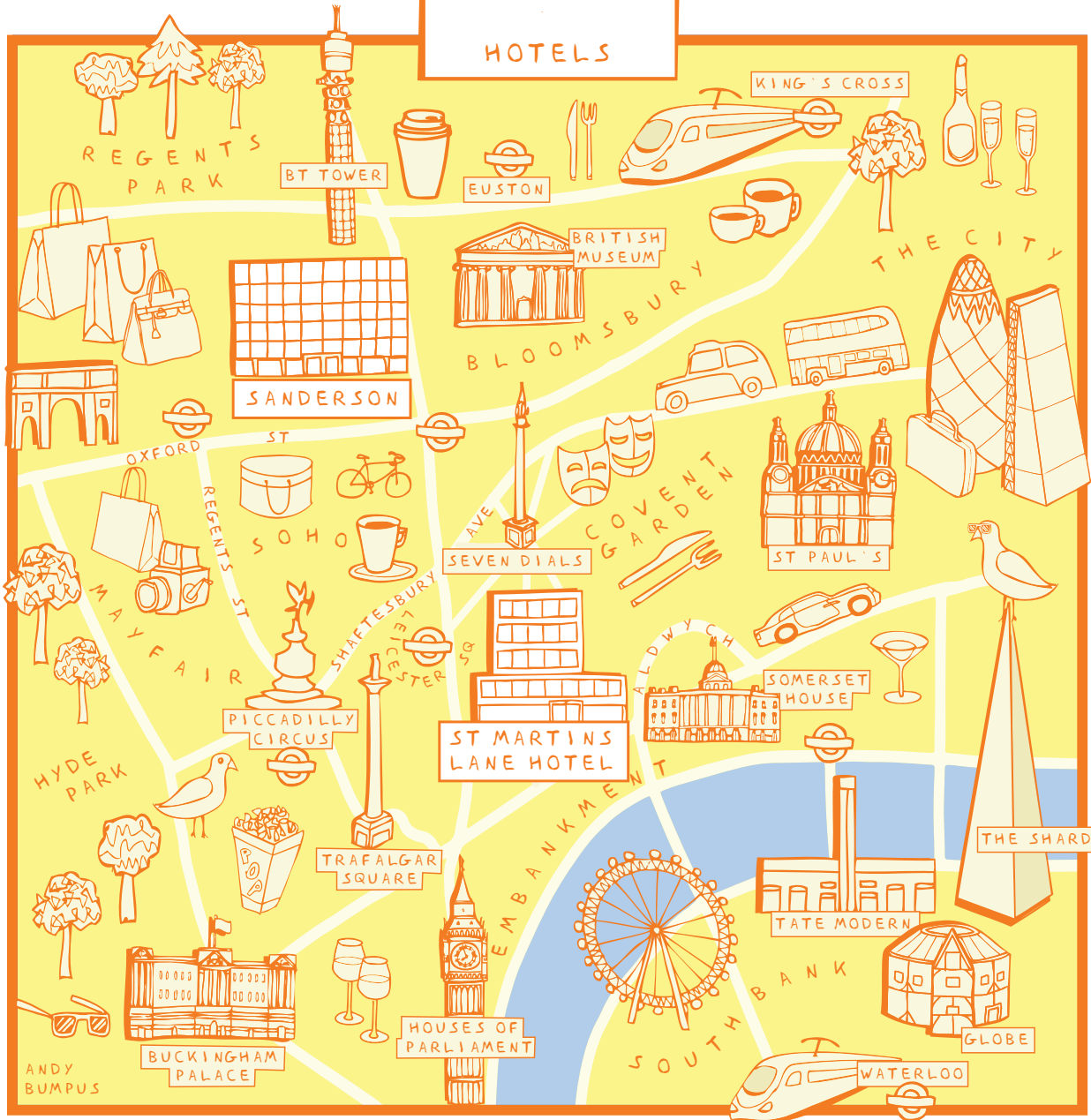
ST MARTINS LANE

LONDON

Event Spaces



LONDON HOTELS



LOCATED IN THE BUSTLING
THEATRE DISTRICT IN
LONDON'S COVENT GARDEN,
ST MARTINS LANE LONDON IS A
DRAMATIC AND DARING EVOLUTION
ON ENGLISH LUXURY.

THIS LIFESTYLE HOTEL RETAINS
ALL THE YOUTHFUL, UNEXPECTED
CHARM OF A LONDON HIDEAWAY,
AT THE VERY HEART OF THE
ENERGETIC WEST END.

BROWSE TO FIND THE PERFECT
SETTING FOR YOUR NEXT EVENT.



STUDIOS 1 & 2

AREA

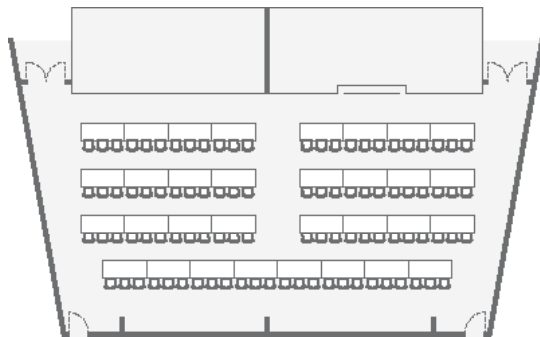
126 square metres

1,357 square feet

CEILING HEIGHT

2.79 metres

9 feet 2 inches



The Studios at St Martin's Lane London are the largest of our spaces, a blank canvas allowing you to create your own style within the room. This gorgeous light and airy room is flooded with natural daylight due to our floor-to-ceiling windows and two inbuilt LCD screens, making it an ideal space for a variety of events, such as product launches, afterparties, cocktail receptions for up to 200 and private meetings for up to 150 theatre style. Mirror details evoke a streamlined elegance, offering an undercurrent of luxury to this versatile space. The space also boasts access to an outdoor terrace, which can be used for breakouts. Alternatively, we offer full black-out capabilities allowing you to create your own unique Studio 1 & 2 experience.

BANQUET	120 PEOPLE
BOARDROOM	47 PEOPLE
CABARET	84 PEOPLE
CLASSROOM	72 PEOPLE
RECEPTION	200 PEOPLE
THEATRE	150 PEOPLE
U-SHAPE	46 PEOPLE



STUDIO 1

AREA

63 square metres

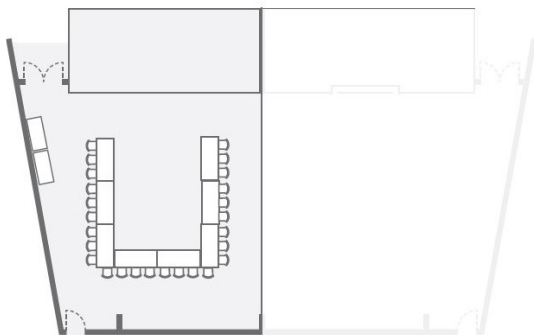
680 square feet

CEILING HEIGHT

2.79 metres

9 feet 2 inches

Our Studios (1 & 2) are interconnected so guests can easily network throughout the area. Studios can be hired independently so you and your guests can spread across a bright and spacious area with a flexible layout to suit your occasion.



BANQUET	50 PEOPLE
BOARDROOM	26 PEOPLE
CABARET	40 PEOPLE
CLASSROOM	36 PEOPLE
RECEPTION	90 PEOPLE
THEATRE	60 PEOPLE
U-SHAPE	26 PEOPLE



STUDIO 2

AREA

61 square metres

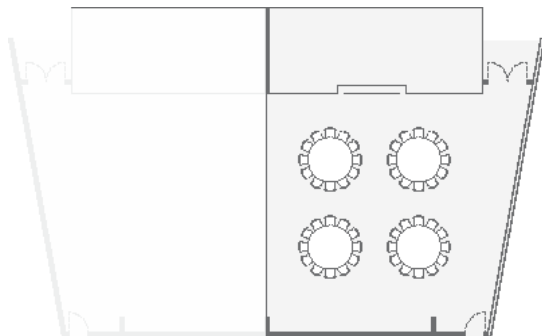
657 square feet

CEILING HEIGHT

2.79 metres

9 feet 6 inches

Opening onto a private terrace, this tranquil space makes it easy to forget you are minutes away from the bustling theatre district. Studio 2 is a bright and airy room which is ideal for a board meeting, training, group presentation or private dinner.



BANQUET	50 PEOPLE
BOARDROOM	26 PEOPLE
CABARET	40 PEOPLE
CLASSROOM	36 PEOPLE
RECEPTION	90 PEOPLE
THEATRE	60 PEOPLE
U-SHAPE	26 PEOPLE



BOARDROOM

AREA

44 square metres

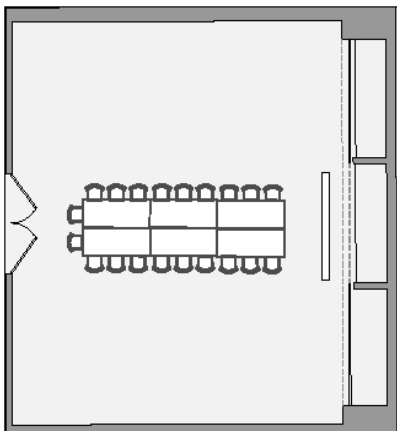
472 square feet

CEILING HEIGHT

2.4 metres

7 feet 9 inches

Whatever type of event you are looking to host, we have the means to accommodate. Our cosy and sleek Boardroom is the perfect space for training, board meetings and workshops. Fully equipped with plasma screen and Lavazza coffee machine, our fridges can be filled with your favourite items from our Boardroom menu upon request. Wifi, stationery and Alessi products are included in the space.



BANQUET	24 PEOPLE
BOARDROOM	20 PEOPLE
CABARET	16 PEOPLE
CLASSROOM	12 PEOPLE
RECEPTION	30 PEOPLE
THEATRE	32 PEOPLE
U-SHAPE	16 PEOPLE



BACKROOM

AREA

55 square metres

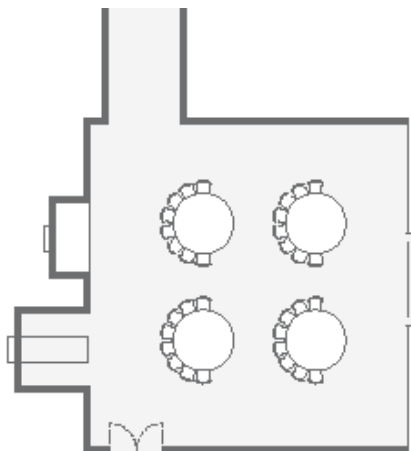
596 square feet

CEILING HEIGHT

2.91 metres

9 feet 5 inches

Available for receptions, weddings and dinners for up to 40, Backroom at St Martins Lane London is a beautifully serene event space, with walls lined in seamless white marble, a statement chandelier and floor-to-ceiling windows pulling in loads natural light during the day. The space is also ideal for presentations and product launches for up to 40 guests in theatre style. With catering by The Restaurant and state-of-the-art audio-visual equipment, your guests will experience the very best that St Martins Lane has to offer.



BANQUET	40 PEOPLE
BOARDROOM	24 PEOPLE
CABARET	40 PEOPLE
CLASSROOM	28 PEOPLE
RECEPTION	40 PEOPLE
THEATRE	40 PEOPLE
U-SHAPE	26 PEOPLE





SPACE ON ONE

AREA

59 square metres

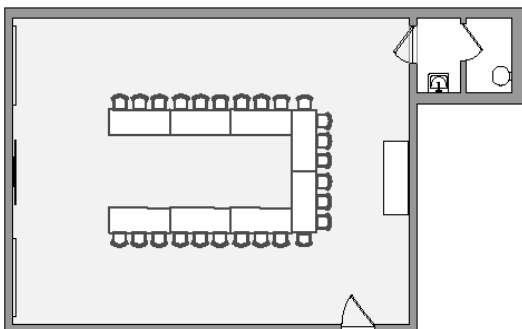
638 square feet

CEILING HEIGHT

3.31 metres

10 feet 9 inches

This open plan space is an ideal location for events such as team away days, board meetings, breakout space and product launches. Located on the first floor, this private room is complete with a boardroom table as well as comfy seating. With two floor-to-ceiling large playful mirrors, the space is given depth and a flash of colour. Space on One also features a private washroom.



BANQUET	40 PEOPLE
BOARDROOM	28 PEOPLE
CABARET	40 PEOPLE
CLASSROOM	28 PEOPLE
RECEPTION	60 PEOPLE
THEATRE	40 PEOPLE
U-SHAPE	26 PEOPLE



THE RESTAURANT

AREA

418 square metres

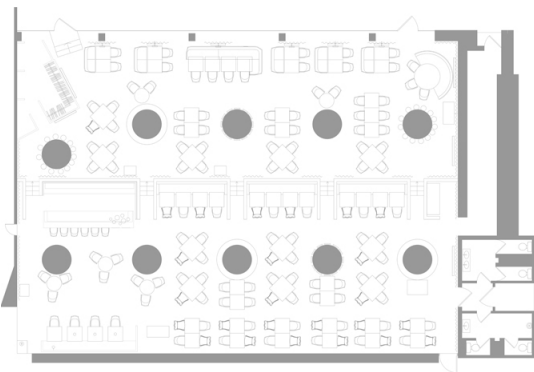
4,502 square feet

CEILING HEIGHT

3.5 metres

11 feet 4 inches

Available for private events for up to 400 guests. Found just a couple of steps away from the lobby, The Restaurant boasts chic ambience, intimately lit with high ceilings and a playlist to match. The space can be adapted for exclusive hire events, removing the furniture to suit multiple layouts. Fresh ingredients, handcrafted cocktails, a specialist wine list, and eye-catching interiors make for an unforgettable night.



BANQUET 220 PEOPLE
 RECEPTION 400 PEOPLE



THE DEN

AREA

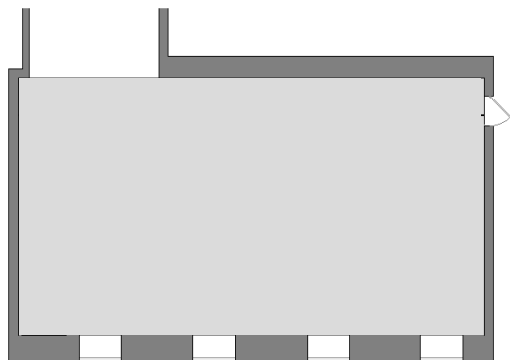
55 square metres

596 square feet

CEILING HEIGHT

3.49 metres

11 feet 4 inches



Welcome to The Den, a quintessentially British, oak-paneled snug at St Martins Lane London. The Den is tucked away off the lobby with grand sofa seating as well as intimate tables for two set in a warm and sophisticated décor. The space is perfect for afternoon tea and refreshing drinks at any time, as well as informal boardroom meetings for up to 25, receptions for up to 60, and private dinners for up to 30. With tongue-in-cheek British flair, the award winning art on the walls animates the space with larger-than-life portraits and visual puns - a playful celebration of British eccentricity.

BANQUET	40 PEOPLE
BOARDROOM	25 PEOPLE
CABARET	32 PEOPLE
OCCASIONAL	30 PEOPLE
RECEPTION	60 PEOPLE
THEATRE	40 PEOPLE



BLIND SPOT LONDON

AREA

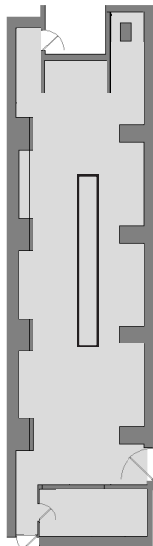
137 square metres

1,474 square feet

CEILING HEIGHT

2.31 metres

7 feet 7 inches



Set behind the façade of a boutique tea counter and a golden hand to welcome you, Blind Spot is a unique space for private events, offering guests bespoke and signature cocktails bursting with flavours influenced by the British Empire and its ancient tea trade. The room is ideal for receptions and parties for up to 120 guests. Offering modern British elegance, Blind Spot is perfectly shadowed by day and illuminated by the energy of the city at night.

BANQUET	60 PEOPLE
BOARDROOM	30 PEOPLE
CABARET	48 PEOPLE
OCCASIONAL	80 PEOPLE
RECEPTION	120 PEOPLE
THEATRE	60 PEOPLE



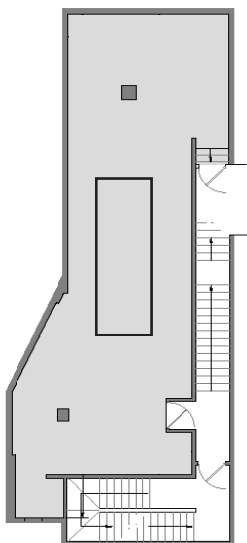
BASEMENT VENUE

AREA

93 square metres
1,006 square feet

CEILING HEIGHT

2.6 metr
8 feet 6



Basement Venue is a destination sensation and is available for private hire for up to 100 guests, or for up to 175 guests if hired with The Den & The Den Terrace. With its own private dance floor, a built-in screen and projector, 60" LED screen, WiFi, and DJ equipment, this space is the perfect place for private celebrations, product launches and corporate parties. Basement Venue is available until 1am.

DANCE FLOOR	14 PEOPLE
BARROOM	14 PEOPLE
RECEPTION	100 PEOPLE
LOUNGE	40 PEOPLE

AV SPECIFICATIONS

STUDIO 1 & 2

- 65" Sony Bravia screen
- Creston Saros speakers
- 1080p/60 projector
- Discreetly hidden into the ceiling with the assistance of a mirrored projector mount
- 1x configurable projection screen
- VGA and HDMI inputs into the system
- One front, one rear as well as a wireless presentation system (Clickshare) in order to stream slide shows and presentations
- 2x microphones (1x handheld - 1x lapels)
- Three-Phase commando socket
- Configurable coloured perimeter lights
- iPad Air 2 controls via the Creston app
- Wireless high-speed internet

BACKROOM

- Portable 55" screen on a trolley with HDMI connectivity
- Wireless high-speed internet

BOARDROOM

- Portable 55" screen on a trolley with HDMI connectivity
- Wireless high-speed internet

SPACE ON ONE

- Portable 55" screen on a trolley with HDMI connectivity
- Wireless high-speed internet



CONTACT

For more information

please call the Events Department on +44 (0)20 7300 5500

or email event.londonenquiries@sbe.com



ST MARTINS LANE
LONDON